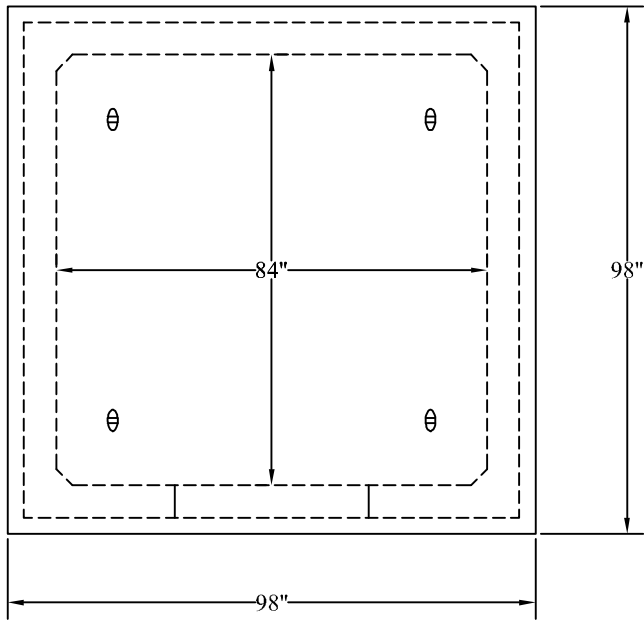


# 7' x 7' Shed

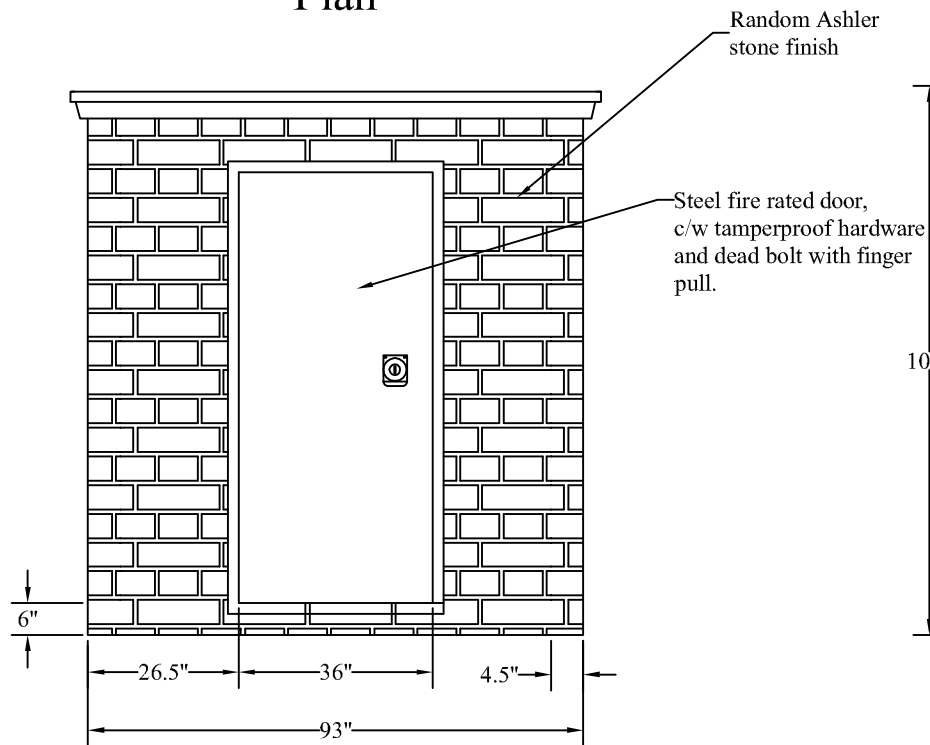
Acton Precast Concrete Limited

## Notes:

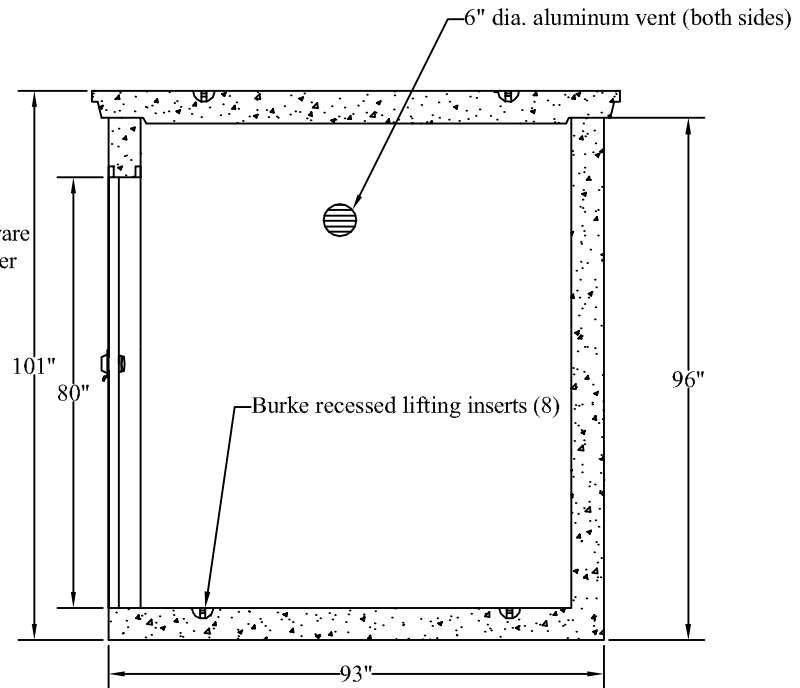
1. Concrete: 32 mpa air 5-7%
2. Reinforcing: 10m @ 12" c/c bw
3. Weight of bottom section: 9160 kgs.
4. Weight of top section: 2400 kgs.
5. Units can be delivered and placed by Acton Precast on prepared granular base.



Plan



Front



Section