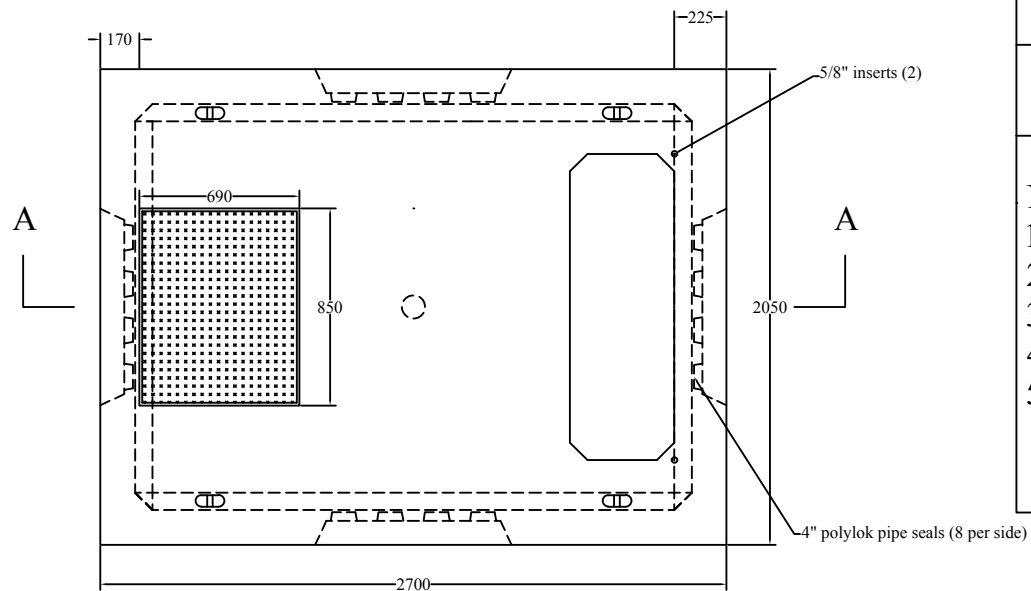


# LPC108 - Transformer Base Guelph Hydro

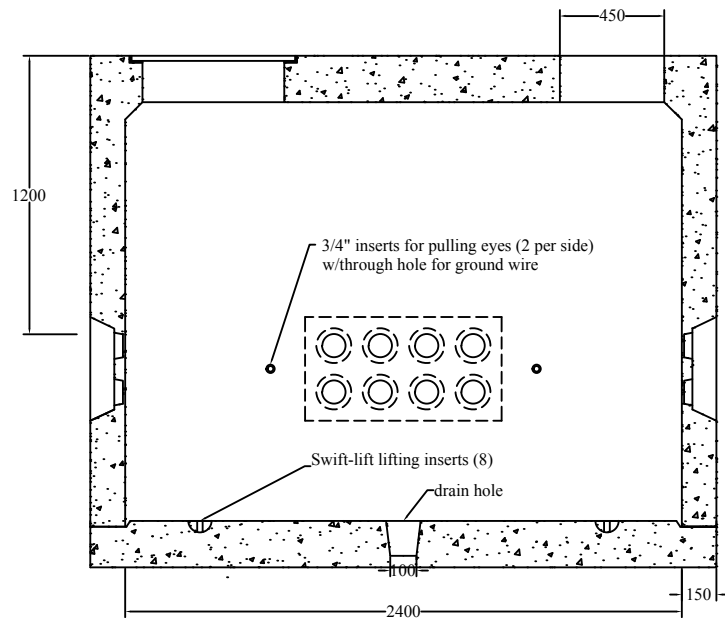
Acton Precast Concrete Limited

## Notes:

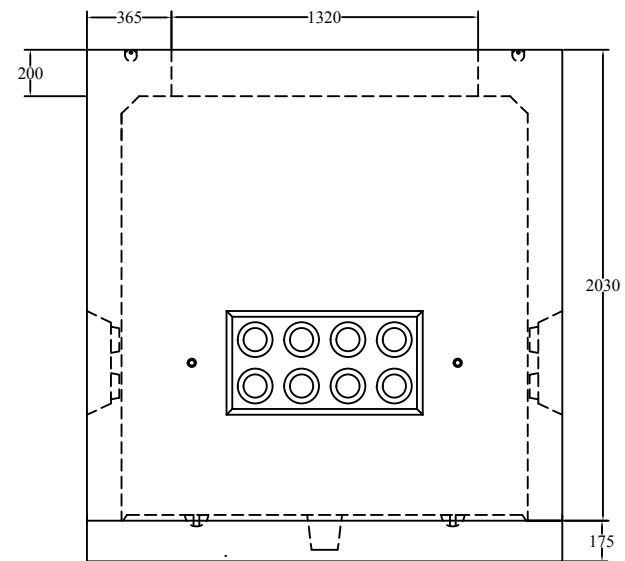
1. Concrete: 35mpa air 5-7%
2. Reinforcing: 15M @ 300 c/c b.w. all areas
3. Finish: Steel form smooth
4. Weight: 9750 kgs
5. All dimensions in mm



Top View



Section A-A



End View